

# Outreach Services

For Deaf and Hard of Hearing Children



December 2008

## The National Deaf Agenda; Goal Three: Collaborative Partnerships

By: Cynthia VanManen, Case Conference Coordinator

Outreach Services are provided due to the good fortune of collaboration with many individuals and organizations across the state to improve the quality of education for all Deaf and Hard of Hearing children. Supporting Deaf and Hard of Hearing children all over the state of Indiana requires coordinated efforts on the part of many from the parents, number one, to the school systems, teachers and various professional staff within the school including, First Steps, other social service entities, Interpreters, doctors and hospitals, and local Deaf community service agencies, just to name a few.

There are many ongoing groups across Indiana that meet regularly to improve services and better work together in an inter-agency approach. Several of these groups also attend national conferences and summits together to learn from other states also working on the same goals of bettering Deaf education nationwide. The information these groups brings back to Indiana consistently supports our forward thinking and progressive work in the field with Deaf and Hard of Hearing children. At the present time there are two working teams of individuals who have attended National Conferences, who are working on a state action plan for Indiana. Outreach staff are involved in each of those efforts. We current have the following state action plans in progress:

- Early Hearing Detection and Intervention, Investing in Family Support Indiana Action Plan
- National Deaf Education Summit Indiana Action Plan Committee, being facilitated by the Deaf and Hard of Hearing Project

In addition, our state Department of Education assists in collaborative efforts by appointing individuals to oversee

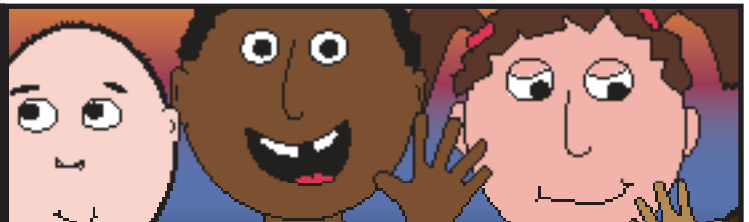
continuous committee efforts, keep up with federal changes in legislation for Deaf and Hard of Hearing children, interpret this at the state level (Article 7), provide training to remain current with new legislative changes, monitor the effectiveness of IEP's for our children and provide a statewide software system for writing IEP's. Many of the districts and parents are experiencing a new IEP program called the ISTART-7. This is just another example of many efforts on behalf of the state of Indiana to effectively collaborate both intra and inter agencies statewide. Better use of technology assists all of us toward improving services throughout the state.



Why do we collaborate in the field of Deaf Education? According the goal of the National Agenda: Goal 3, Collaborative Partnerships: "Deaf and hard of hearing children require and are best served when effective and mutually respectful partnerships are established between and among educators, families, and the institutions and programs in the community that serve those children and their families. Given the importance of early and on-going

### Outreach Mission:

To identify and find resources to meet the needs of deaf and hard of hearing children and their families throughout the state of Indiana.



communication, language, and educational development for these children, a seamless system of information and services and programs must be made available to the family and child throughout her/his educational career.” See the National Deaf Education Project website for more information at [www.ndepnow.org](http://www.ndepnow.org).

Outreach would like to express gratitude to all of our partners who are working respectfully together with an attitude of synergy knowing that by working together we can build capacity for more services state-wide than any one organization or agency could possibly do alone.

**National ASL/English Bilingual  
Education and Research  
for Early Childhood Education of Deaf  
and Hard of Hearing  
Children Project Underway**

by Louise Fitzpatrick

Outreach Services, along with nine other deaf schools in the nation, is invited to participate in this exciting ASL/English Bilingual Education and Research for Early Childhood Education project. It is a three year working committee. Our representatives are Jodee Crace, Early Intervention Coordinator and Louise Fitzpatrick, Language Specialist. They went to Austin, Texas the week of November 5 to November 9<sup>th</sup>.

The purpose of this committee is to identify challenges and opportunities as well as to strengthen collaborative efforts among Early Childhood Education educators. The group also developed recommendations for future directions for the field in order to improve services to families and young children throughout the United States.

Listed below are the details of the working plan:

- Early Childhood Bilingual data collection
- A brochure for parents, professionals and others
- Website development
- A Resource Packet for parents
- A curriculum packet for programs to include assessment recommendations and bilingual strategies with an emphasis on ASL, Literacy and Culture, including spoken English “the bilingual way”
- FAQ’s for professionals, parents and community
- Public Relations- dissemination of information to the public and professional groups
- Model Early Childhood Bilingual Programs designated for regions.

This working project is expected to end by 2010. Information will be shared in the future.

# Upcoming Events

## December 6

ASL Storytime  
2 pm  
Barnes and Noble  
2240 East 80th Avenue  
Merrillville, IN 46410

## December 9-19

Gift of the Magi  
Interpreted if requested  
10 am  
Tuesdays through Fridays  
**For more information  
visit [www.indycti.org](http://www.indycti.org)  
or call 317-252-5900  
ext 503**

## December 13

**St. Joseph Institute for  
the Deaf’s Parent/Child  
Playgroup**  
**10 am - 11:30 am**  
St. Joseph Institute for the Deaf  
9192 Waldemar Road,  
Indianapolis, IN 46268  
Contact Carrie Tam-  
minga at  
[ctamminga@sjid.org](mailto:ctamminga@sjid.org) or  
call 317-442-4233

## December 12, January 16 & 30 February 20 March 6, March 20 April 24, May 8 Infant Toddler Play- groups

**9:30 am -11 am**  
Indiana School for the Deaf,  
1200 E. 42nd Street,  
Indpls, IN 46205

Preschool Building,  
Preschool Gym #131  
Contact Lori at [ldille@isd.k12.in.us](mailto:ldille@isd.k12.in.us)

## February 9

**Indiana Hands & Voices**  
Informational Meeting  
5:30 pm to 8:30 pm  
Fishers Library  
5 Municipal Drive  
Fishers, IN 46038  
Please RSVP to  
/Lisa Kovacs at  
[lisakovacs@inhandsand-voices.org](mailto:lisakovacs@inhandsand-voices.org) or  
317-605-3885



## February 12, 2009

## April 16, 2009

## June 18, 2009

### **Boost Your Voicing Techniques**

Basic - February 12  
5:30 - 8:30 pm  
Mid-Range - April 16  
5:30 - 8:30 pm  
Advanced - June 18 5:30  
- 8:30 pm  
Polk Conference Center,  
Anixter Center, 2023 N.  
Clybourn, Chicago, IL  
60614, for more infor-  
mation: [www.ilrid.org](http://www.ilrid.org)  
Email Tim Mahoney at  
[AustinCop@aol.com](mailto:AustinCop@aol.com)

# Resources

A common question asked by parents and educators is, "Are there any resources to assist with purchasing hearing aids and assistive technology devices for children who are Deaf and Hard of Hearing?" The answer is YES.

There are a variety of local, state, and national resources that may assist professionals and families. The following list (although not inclusive) of various associations and agencies, may assist both educators and parents who are in need of financial/technological support:

## **Alexander Graham Bell Association**

3417 Volta Place, NW, Washington, DC 20007  
Phone: (202) 337-5220 (V) or (202) 337-5221 (TTY)  
E-mail: [info@agbell.org](mailto:info@agbell.org) Web: <http://www.agbell.org>

## **American Society for Deaf Children**

P.O. Box 3355, Gettysburg, PA 17325  
Phone: (717) 334-7922 (V/TTY) or (800) 942-2732  
E-mail: [asdc@deafchildren.org](mailto:asdc@deafchildren.org)  
Web: <http://deafchildren.org>

## **American Speech-Language and Hearing Association (ASHA)**

10801 Rockville Pike, Rockville, MD 20852  
Phone: (800) 638-8255 (V/TTY)  
E-mail: [actioncenter@asha.org](mailto:actioncenter@asha.org)  
Web: <http://www.asha.org>

**OMS Insurance Support** [www.omsinsurancesupport.org](http://www.omsinsurancesupport.org)

**Cochlear Implant Association, Inc. (CIAI)** [www.cici.org](http://www.cici.org)

## **National Deaf Network and Education Clearinghouse**

Gallaudet University, 800 Florida Ave N.E.  
Washington, DC 20002 (202) 651-5051  
<http://clerccenter.gallaudet.edu>

**Katie's Hear to Help Foundation** [www.heartohehelp.net](http://www.heartohehelp.net)

**Hear-It** [www.Hear-It.org](http://www.Hear-It.org)

## **AUDIENT Alliance for Accessible Hearing Care**

Northwest Lions Foundation for Sight & Hearing  
901 Boren Ave, Suite 810, Seattle, WA 98104-3534  
[www.audientalliance.org](http://www.audientalliance.org)

## **The Starkey Hearing Foundation**

6700 Washington Avenue South, Eden Prairie, MN 55344  
(800) 648-4327  
<http://www.sotheworldmayhear.org/forms/hearnow.php>  
[mnproj@hearingaid.org](mailto:mnproj@hearingaid.org)  
<http://www.sotheworldmayhear.org>  
<http://www.listen-up.org/haidfund.htm>

## **Hearing Impaired Kids Endowment**

(The HIKE Fund, Inc.)  
C/o International Center for Job's Daughters  
233 W. 6<sup>th</sup> St  
Papillion, NE 68046-2210  
(402) 592-7987  
<http://www.thehikefund.org>

## **Miracle Ear Children's Foundation**

P.O. Box 59261  
Minneapolis, MN 55459-0261  
[http://www.miracle-ear.com/resources/children\\_request.asp](http://www.miracle-ear.com/resources/children_request.asp)  
(800) 234-5422

## **Boys Town National Research Hospital**

555 N. 30<sup>th</sup> St.  
Omaha, NE 68131  
[www.boystownhospital.org](http://www.boystownhospital.org)  
[www.babyhearing.org](http://www.babyhearing.org)  
(402) 498-6511

## **Hearing Loss Association of America**

<http://www.hearingloss.org/support/financial.asp>

## **Better Hearing Institute**

P.O. Box 1840  
Washington, DC 20013  
[www.betterhearing.org/about](http://www.betterhearing.org/about)  
(800) 327-9355

**John Tracy Clinic** [www.johntracyclinic.org](http://www.johntracyclinic.org)

The following civic/service organizations may be of additional assistance:

**Elks Club** [www.elks.org](http://www.elks.org)

**Knights of Columbus** email: [info2kofc.org](mailto:info2kofc.org)

**Sertoma International** [www.sertoma.org](http://www.sertoma.org)

**Kiwanis International** [www.kiwanis.org](http://www.kiwanis.org)

**Lions Club** [www.lionsclub.org](http://www.lionsclub.org)

**Lions Affordable Hearing Aid Project** [www.lionsear.org](http://www.lionsear.org)

**Rotary International** [www.rotary.org](http://www.rotary.org)

**Shriner's International** [www.shrinershq.org](http://www.shrinershq.org)

**Optimist Club** <http://www.oifoundation.org>

Compiled by Sheryl Foust Whiteman, Educational Audiologist

To view a list of upcoming events online visit <http://www.deaf-kids.com/IND/FamilyEducation/Events.asp>

## “Your Community, Your Opportunity, Your Child”

By Meg Warnock, Preschool Teacher  
and Diane Hazel Jones, Outreach Services

Eddy Laird, an associate professor of Deaf Education at McDaniel College in Maryland, and it's assistant coordinator of the American Sign Language (ASL) Specialist Program, presented a workshop titled “Your Community, Your Opportunity, Your Child.” This workshop was geared towards all parents of deaf and hard-of-hearing children, and the essential points presented include the following:

1. Recognize and accept your child's language and cultural differences.
2. Embrace a philosophy of positive language learning experiences.
3. Accept and support their choice of language in real communicative situations.

A philosophy is defined as a “system of beliefs that one lives by”. While explaining the importance of embracing a philosophy of positive language learning experiences in school, Dr. Laird challenged parents to think about assuming a philosophy to use in their home. For example, a school for the deaf may have a bilingual and bicultural philosophy that is visibly posted for students, families, staff, and visitors to observe and follow. However, as research shows, 90% of a child's waking hours are spent outside of the school environment. Therefore, there is a need to continue having visual reminders of providing positive language learning experiences outside of school.

This informative and enlightening workshop was the topic of a November 14<sup>th</sup> playgroup hosted by Outreach staff and Indiana School for the Deaf Preschool staff. Important elements of Dr. Laird's workshop were introduced, and parents present at the playgroup discussed what they felt were components of having a positive language learning environment in the home: comfort, unconditional love, learning tools, acceptance of language choice, exposure to more than one language, discipline, flexibility, and freedom of expression. The group then developed the following sample “home philosophy” statement:

“Our home is a safe, comfortable environment, where unconditional love and guidance takes place. We embrace the bilingual language and culture in our home.”

Why don't you and your family take some time to develop your own “Home Philosophy” and post in a place where you all can see it and put it into practice? Thank you Dr. Eddy Laird for sharing your wisdom! Thank you parents for sharing your thoughts!

## Meet some of the Outreach Staff



**Martha Fisk** has worked in the Outreach Department for 42 years. She has served in several capacities, and is currently the case conference scheduling secretary. She schedules and arranges all the case conferences for enrolled students at the Indiana School for the Deaf. Marty may be reached at [mfisk@isd.k12.in.us](mailto:mfisk@isd.k12.in.us) or 317-920-6225 v/tty



**Cynthia Van Manen, M.Sc., BSW, CSC, CI** is a Case Conference Coordinator for Outreach. Cynthia is responsible for ensuring legal compliance for Outreach for enrolled students at ISD and for running IEP meetings for the students with their families.

Cynthia has been in Outreach for 7 years. She obtained her M.Sc. from Gallaudet in Special Education Administration. She is a licensed Teacher of the Deaf, a licensed Social Worker and a nationally certified interpreter. Cynthia may be reached at [cvanmanen@isd.k12.in.us](mailto:cvanmanen@isd.k12.in.us) or 317 – 920 – 6266 V/tty, ISDVP08.isd.k12.in.us VP



Carol Wild, MA, graduated from Ball State University with a BS in Special Education and Deaf Education and from Butler University with a MA in Special Education and Deaf Education and endorsements in Emotional Handicap and Learning Disabilities.

Carol has worked in Outreach Services/Indiana School for the Deaf for thirty years in various capacities and presently is a Case Conference Coordinator. Carol may be reached at [cwild@isd.k12.in.us](mailto:cwild@isd.k12.in.us) and at 317- 920-6224 v/tty

### Outreach Services for Deaf and Hard of Hearing

**Children has a website, [www.deaf-kids.com](http://www.deaf-kids.com), which allows you to share your event information with the entire state of Indiana.**

We value diversity and respect all viewpoints and opportunities for communication; therefore, please contact sponsors of events supporting specific methodologies. We suggest the questions on the following link be considered when viewing website and newsletter information:

<http://www.deaf-kids.com/IND/Links.asp>

**Please submit information at least one month in advance of your event. Questions? Call Joanie Jones at 1-800-722-6166 or email [jjones@isd.k12.in.us](mailto:jjones@isd.k12.in.us)**